

Equipment 947 – Komatsu PC 300LC-7

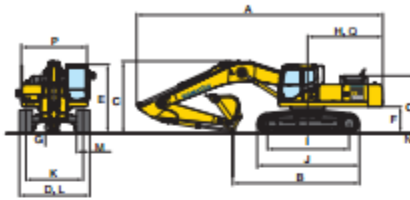


Photo may include optional equipment.

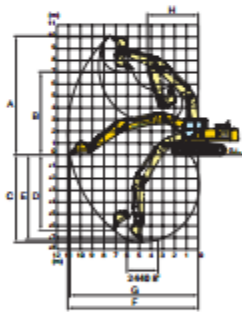
DIMENSIONS

	2228 mm 7'3"	2558 mm 8'4"	3185 mm 10'5"	4828 mm 15'2"
A Overall length	11298 mm 37'1"	11188 mm 36'8"	11140 mm 36'7"	11170 mm 36'8"
B Length on ground (transport): PC300-7 PC300LC-7	6980 mm 22'11"	6585 mm 21'7"	6755 mm 22'2"	5388 mm 17'5"
C Overall height (to top of boom)	3488 mm 11'2"	3418 mm 11'2"	3288 mm 10'9"	3768 mm 12'4"

	PC300-7	PC300LC-7
D Overall width	3198 mm 10'6"	3298 mm 10'10"
E Overall height (to top of cab)	3138 mm 10'3"	3138 mm 10'3"
F Ground clearance, counterweight	1185 mm 3'11"	1185 mm 3'11"
G Ground clearance (minimum)	588 mm 1'9"	588 mm 1'9"
H Tail swing radius	3458 mm 11'4"	3458 mm 11'4"
I Track length on ground	3788 mm 12'2"	4838 mm 15'3"
J Track length	4625 mm 15'2"	4955 mm 16'3"
K Track gauge	2588 mm 8'6"	2588 mm 8'6"
L Width of crawler	3198 mm 10'6"	3298 mm 10'10"
M Shoe width	688 mm 22.6"	788 mm 27.8"
N Grouser height	38 mm 1.4"	38 mm 1.4"
O Machine cab height	2588 mm 8'6"	2588 mm 8'6"
P Machine cab width	2995 mm 9'10"	2995 mm 9'10"
Q Distance, swing center to rear end	3485 mm 11'2"	3485 mm 11'2"



WORKING RANGE



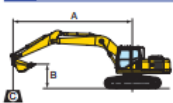
	Arm	2228 mm 7'3"	2558 mm 8'4"	3185 mm 10'5"	4828 mm 15'2"
A Max. digging height	9588 mm 31'5"	9965 mm 32'8"	10218 mm 33'6"	10558 mm 34'7"	
B Max. dumping height	6595 mm 21'8"	6895 mm 22'7"	7118 mm 23'4"	7498 mm 24'7"	
C Max. digging depth	6355 mm 20'10"	6785 mm 22'0"	7388 mm 24'3"	8188 mm 26'10"	
D Max. vertical wall digging depth	5128 mm 16'10"	5888 mm 19'4"	6488 mm 21'3"	7288 mm 23'11"	
E Max. digging depth of cut for 8' level	6138 mm 20'1"	6528 mm 21'5"	7188 mm 23'7"	8045 mm 26'5"	
F Max. digging reach	18155 mm 59'4"	18558 mm 61'1"	19558 mm 64'2"	21188 mm 69'6"	
G Max. digging reach at ground level	9958 mm 32'8"	10355 mm 34'0"	10928 mm 35'10"	11738 mm 38'6"	
H Min. swing radius	4398 mm 14'5"	4488 mm 14'5"	4318 mm 14'2"	4328 mm 14'2"	
90° swing	Bucket digging force at power max.	228 kN	228 kN	200 kN	200 kN
		23300 kg/51,370 lb	23300 kg/51,370 lb	20400 kg/44,970 lb	20400 kg/44,970 lb
120° swing	Arm crowd force at power max.	225 kN	193 kN	165 kN	139 kN
		22900 kg/50,490 lb	19700 kg/43,430 lb	16800 kg/37,040 lb	14200 kg/31,310 lb
150° swing	Bucket digging force at power max.	250 kN	250 kN	227 kN	227 kN
		26400 kg/58,200 lb	26400 kg/58,200 lb	23100 kg/50,930 lb	23100 kg/50,930 lb
180° swing	Arm crowd force at power max.	235 kN	201 kN	171 kN	144 kN
		24800 kg/54,910 lb	20500 kg/45,190 lb	17400 kg/38,360 lb	14700 kg/32,410 lb

BACKHOE BUCKET, ARM, AND BOOM COMBINATION

Bucket Capacity (heaped)				Width		Weight		Number of Teeth	Arm Length			
SAE, PCSA	CECE	Without Side Cutters	With Side Cutters	Without Side Cutters	With Side Cutters	2.22 m 7'3"	2.55 m 8'4"		3.18 m 10'5"	4.82 m 15'2"		
0.52 m³ 0.68 yd³	0.48 m³ 0.63 yd³	618 mm 24.0"	748 mm 29.1"	684 kg 1,460 lb	3	○	○	○	○			
1.14 m³ 1.49 yd³	1.00 m³ 1.31 yd³	1145 mm 45.1"	1275 mm 50.2"	900 kg 1,960 lb	4	○	○	○	○			
1.48 m³ 1.83 yd³	1.28 m³ 1.57 yd³	1348 mm 52.8"	1445 mm 56.9"	1015 kg 2,240 lb	5	○	○	○	○			
1.88 m³ 2.09 yd³	1.48 m³ 1.83 yd³	1515 mm 59.8"	1645 mm 64.8"	1182 kg 2,450 lb	6	□	□	□	×			
1.88 m³ 2.35 yd³	1.68 m³ 2.09 yd³	1788 mm 69.9"	—	1115 kg 2,460 lb	6	●	●	●	×			
**1.48 m³ 1.83 yd³	1.28 m³ 1.57 yd³	1458 mm 57.4"	—	1588 kg 3,320 lb	5	○	○	○	×			

○: General purpose use, density up to 1.8 ton/m³ 1.52 U.S. ton/yd³ X: Not usable
 □: General purpose use, density up to 1.5 ton/m³ 1.26 U.S. ton/yd³ *: Without side cutters
 ●: Light duty work, density up to 1.2 ton/m³ 1.01 U.S. ton/yd³ **: Rock bucket (with side shroud)

LIFTING CAPACITY



- A: Reach from swing center
- B: Bucket hook height
- C: Lifting capacity
- Ct: Rating over front
- Ca: Rating over side
- ⊕: Rating at maximum reach

PC80-7	A	Bucket 1.00 m 1.02 (3'00) height			Bucket 1.00 m 1.02 (3'00) height			Bucket 1.00 m 1.02 (3'00) height			Bucket 1.00 m 1.02 (3'00) height		
		0.0 m 0'0"	0.5 m 1'10"	1.0 m 3'3"	0.0 m 0'0"	0.5 m 1'10"	1.0 m 3'3"	0.0 m 0'0"	0.5 m 1'10"	1.0 m 3'3"	0.0 m 0'0"	0.5 m 1'10"	1.0 m 3'3"
2.0 m 6'7"	11,000 kg	11,000 kg	11,000 kg	11,000 kg	11,000 kg	11,000 kg	11,000 kg	11,000 kg	11,000 kg	11,000 kg	11,000 kg	11,000 kg	

*Load is limited by hydraulic capacity rather than tipping. Ratings are based on SAE Standard No. JISO 10567. Rated loads do not exceed 87% of hydraulic lift capacity or 75% of tipping load.

LIFTING CAPACITY

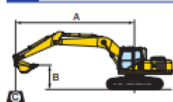


- A: Reach from swing center
- B: Bucket hook height
- C: Lifting capacity
- Ct: Rating over front
- Ca: Rating over side
- ⊕: Rating at maximum reach

PC80-7	A	Bucket 1.00 m 1.02 (3'00) height			Bucket 1.00 m 1.02 (3'00) height			Bucket 1.00 m 1.02 (3'00) height			Bucket 1.00 m 1.02 (3'00) height		
		0.0 m 0'0"	0.5 m 1'10"	1.0 m 3'3"	0.0 m 0'0"	0.5 m 1'10"	1.0 m 3'3"	0.0 m 0'0"	0.5 m 1'10"	1.0 m 3'3"	0.0 m 0'0"	0.5 m 1'10"	1.0 m 3'3"
2.0 m 6'7"	11,000 kg	11,000 kg	11,000 kg	11,000 kg	11,000 kg	11,000 kg	11,000 kg	11,000 kg	11,000 kg	11,000 kg	11,000 kg	11,000 kg	

*Load is limited by hydraulic capacity rather than tipping. Ratings are based on SAE Standard No. JISO 10567. Rated loads do not exceed 87% of hydraulic lift capacity or 75% of tipping load.

LIFTING CAPACITY WITH LIFTING MODE ON MULTI-FUNCTION COLOR MONITOR

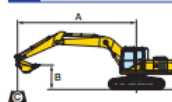


- A: Reach from swing center
- B: Bucket hook height
- C: Lifting capacity
- Ct: Rating over front
- Ca: Rating over side
- ⊕: Rating at maximum reach

PC80-7	A	Bucket 1.00 m 1.02 (3'00) height			Bucket 1.00 m 1.02 (3'00) height			Bucket 1.00 m 1.02 (3'00) height			Bucket 1.00 m 1.02 (3'00) height		
		0.0 m 0'0"	0.5 m 1'10"	1.0 m 3'3"	0.0 m 0'0"	0.5 m 1'10"	1.0 m 3'3"	0.0 m 0'0"	0.5 m 1'10"	1.0 m 3'3"	0.0 m 0'0"	0.5 m 1'10"	1.0 m 3'3"
2.0 m 6'7"	11,000 kg	11,000 kg	11,000 kg	11,000 kg	11,000 kg	11,000 kg	11,000 kg	11,000 kg	11,000 kg	11,000 kg	11,000 kg	11,000 kg	

*Load is limited by hydraulic capacity rather than tipping. Ratings are based on SAE Standard No. JISO 10567. Rated loads do not exceed 87% of hydraulic lift capacity or 75% of tipping load.

LIFTING CAPACITY WITH LIFTING MODE ON MULTI-FUNCTION COLOR MONITOR



- A: Reach from swing center
- B: Bucket hook height
- C: Lifting capacity
- Ct: Rating over front
- Ca: Rating over side
- ⊕: Rating at maximum reach

PC80-7	A	Bucket 1.00 m 1.02 (3'00) height			Bucket 1.00 m 1.02 (3'00) height			Bucket 1.00 m 1.02 (3'00) height			Bucket 1.00 m 1.02 (3'00) height		
		0.0 m 0'0"	0.5 m 1'10"	1.0 m 3'3"	0.0 m 0'0"	0.5 m 1'10"	1.0 m 3'3"	0.0 m 0'0"	0.5 m 1'10"	1.0 m 3'3"	0.0 m 0'0"	0.5 m 1'10"	1.0 m 3'3"
2.0 m 6'7"	11,000 kg	11,000 kg	11,000 kg	11,000 kg	11,000 kg	11,000 kg	11,000 kg	11,000 kg	11,000 kg	11,000 kg	11,000 kg	11,000 kg	

*Load is limited by hydraulic capacity rather than tipping. Ratings are based on SAE Standard No. JISO 10567. Rated loads do not exceed 87% of hydraulic lift capacity or 75% of tipping load.