

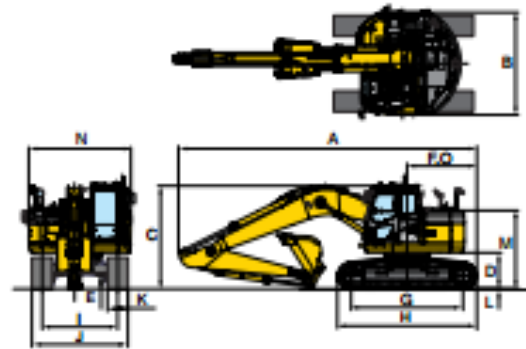
Equipment 945 – Komatsu PC228USLC3



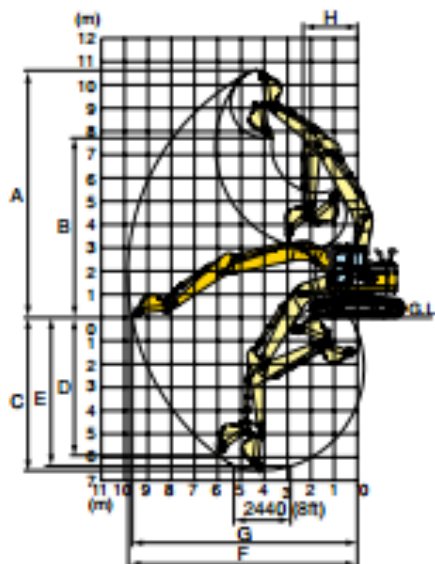
**DIMENSIONS**

	PC228US-3E0	PC228USLC-3E0
Arm	2925 mm 9'7"	2925 mm 9'7"
A Overall length	8700 mm 28'7"	8890 mm 29'2"
B Overall width	2980 mm 9'9"	3080 mm 10'1"
C Overall height (to top of cab)*	3035 mm 9'11"	3035 mm 9'11"
D Ground clearance, counterweight*	1060 mm 3'6"	1060 mm 3'6"
E Minimum Ground clearance	440 mm 1'5"	440 mm 1'5"
F Tail swing radius	1680 mm 5'6"	1680 mm 5'6"
G Length of track on ground	3275 mm 10'9"	3655 mm 12'0"
H Track length	4070 mm 13'4"	4450 mm 14'7"
I Track gauge	2200 mm 7'3"	2380 mm 7'10"
J Width of crawler	2800 mm 9'2"	3080 mm 10'1"
K Shoe width	600 mm 23'6"	700 mm 27'6"
L Grouser height	26 mm 1"	26 mm 1"
M Machine cab height*	2285 mm 7'6"	2285 mm 7'6"
N Upper structure width	2980 mm 9'9"	2980 mm 9'9"
O Distance, swing center to rear end	1680 mm 5'6"	1680 mm 5'6"

\* Excluding grouser height



**WORKING RANGE**



	Arm	2925 mm 9'7"
A Max. digging height	10700 mm 35'1"	
B Max. dumping height	7825 mm 25'8"	
C Max. digging depth	6620 mm 21'9"	
D Max. vertical wall digging depth	5980 mm 19'7"	
E Max. digging depth of cut for 8' level	6370 mm 20'11"	
F Max. digging reach	9875 mm 32'5"	
G Max. digging reach at ground level	9700 mm 31'10"	
H Min. swing radius	2310 mm 7'7"	
80 rating	Bucket digging force at power max.	138 kN 14100 kg/31,060 lb
	Arm crowd force at power max.	101 kN 10300 kg/22,710 lb
100 rating	Bucket digging force at power max.	149 kN 15200 kg/33,510 lb
	Arm crowd force at power max.	108 kN 11000 kg/24,250 lb



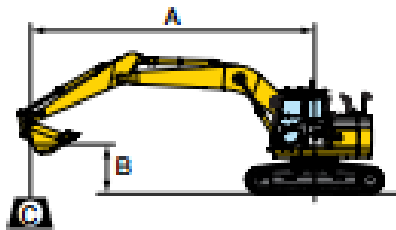
**BACKHOE BUCKET, ARM, AND BOOM COMBINATION**

Bucket Capacity (heaped)		Width		Weight	Number of Teeth	Arm Length
SAE, PCSA	CECE	Without Side Cutters	With Side Cutters	With Side Cutters		2.93 m 9'7"
0.50 m <sup>3</sup> 0.65 yd <sup>3</sup>	0.45 m <sup>3</sup> 0.59 yd <sup>3</sup>	750 mm 29.5"	875 mm 34.4"	478 kg 1,050 lb	3	○
0.80 m <sup>3</sup> 1.05 yd <sup>3</sup>	0.70 m <sup>3</sup> 0.92 yd <sup>3</sup>	1045 mm 41.1"	1170 mm 46.1"	635 kg 1,400 lb	5	○
0.93 m <sup>3</sup> 1.22 yd <sup>3</sup>	0.80 m <sup>3</sup> 1.05 yd <sup>3</sup>	1280 mm 47.2"	1325 mm 52.2"	896 kg 1,930 lb	5	□

○: General purpose use, density up to 1.8 ton/m<sup>3</sup> 1.52 U.S. ton/yd<sup>3</sup>  
 □: General purpose use, density up to 1.5 ton/m<sup>3</sup> 1.26 U.S. ton/yd<sup>3</sup>



**LIFTING CAPACITY WITH LIFTING MODE**

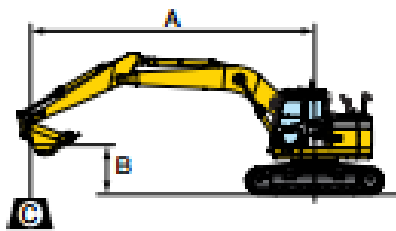


- A: Reach from swing center
- B: Bucket hook height
- C: Lifting capacity
- Cf: Rating over front
- Cs: Rating over side
- ⊗: Rating at maximum reach

- Conditions:
- 5700 mm 18'8" one-piece boom
  - 0.8 m<sup>3</sup> 1.05 yd<sup>3</sup> SAE heaped bucket
  - Shoe width:
    - PC228US-3E0 600 mm 24" triple grouser

PC228US-3E0		Arm: 2925 mm 9'7"		Bucket: 0.8 m <sup>3</sup> 1.05 yd <sup>3</sup> SAE heaped				Shoe: 600 mm 24" triple grouser					
A	B	⊗ MAX		7.5 m 24'		6.0 m 19'		4.5 m 14'		3.0 m 9'		1.5 m 4'	
		Cf	Cs	Cf	Cs	Cf	Cs	Cf	Cs	Cf	Cs	Cf	Cs
6.0 m 19'		*2750 kg *6,000 lb	2350 kg 5,200 lb			*4300 kg *9,500 lb	3700 kg 8,200 lb						
4.5 m 14'		*2750 kg *6,100 lb	1900 kg 4,200 lb	3850 kg 8,500 lb	2300 kg 5,100 lb	*4900 kg *10,800 lb	3550 kg 7,800 lb	*5450 kg *12,100 lb	*5450 kg *12,100 lb				
3.0 m 9'		*2900 kg *6,400 lb	1700 kg 3,700 lb	3700 kg 8,200 lb	2200 kg 4,800 lb	5450 kg 12,000 lb	3300 kg 7,300 lb	*7450 kg *16,400 lb	5300 kg 11,700 lb	*11750 kg *26,000 lb	10250 kg 22,800 lb		
1.5 m 4'		2850 kg 6,300 lb	1600 kg 3,500 lb	3600 kg 7,900 lb	2050 kg 4,500 lb	5200 kg 11,400 lb	3050 kg 6,700 lb	8300 kg 18,300 lb	4750 kg 10,500 lb	*6800 kg *15,000 lb	*6800 kg *15,000 lb		
0 m 0'		2900 kg 6,400 lb	1600 kg 3,600 lb	3500 kg 7,700 lb	1950 kg 4,300 lb	4950 kg 10,900 lb	2850 kg 6,300 lb	7900 kg 17,400 lb	4450 kg 9,800 lb	*7950 kg *17,500 lb	*7950 kg *17,500 lb	*7100 kg *15,700 lb	*7100 kg *15,700 lb
-1.5 m -4'		3200 kg 7,000 lb	1800 kg 3,900 lb	3450 kg 7,600 lb	1950 kg 4,300 lb	4950 kg 10,700 lb	2750 kg 6,100 lb	7750 kg 17,100 lb	4300 kg 9,500 lb	*11300 kg *24,900 lb	8500 kg 18,700 lb	*10850 kg *23,900 lb	*10850 kg *23,900 lb
-3.0 m -9'		3850 kg 8,400 lb	2150 kg 4,800 lb			4900 kg 10,800 lb	2750 kg 6,100 lb	7600 kg 17,200 lb	4350 kg 9,600 lb	*15600 kg *34,500 lb	8700 kg 19,100 lb		
-4.5 m -14'		5500 kg 12,100 lb	3150 kg 7,000 lb					8050 kg 17,700 lb	4550 kg 10,000 lb	*13200 kg *29,100 lb	9050 kg 19,900 lb		

\* Load is limited by hydraulic capacity rather than tipping. Ratings are based on SAE Standard No. J15010567. Rated loads do not exceed 87% of hydraulic lift capacity or 75% of tipping load.



- A: Reach from swing center
- B: Bucket hook height
- C: Lifting capacity
- Cf: Rating over front
- Cs: Rating over side
- ⊗: Rating at maximum reach

- Conditions:
- 5700 mm 18'8" one-piece boom
  - 0.8 m<sup>3</sup> 1.05 yd<sup>3</sup> SAE heaped bucket
  - Shoe width:
    - PC228USLCLC-3E0 700 mm 28" triple grouser

PC228USLCLC-3E0		Arm: 2925 mm 9'7"		Bucket: 0.8 m <sup>3</sup> 1.05 yd <sup>3</sup> SAE heaped				Shoe: 700 mm 28" triple grouser					
A	B	⊗ MAX		7.5 m 24'		6.0 m 19'		4.5 m 14'		3.0 m 9'		1.5 m 4'	
		Cf	Cs	Cf	Cs	Cf	Cs	Cf	Cs	Cf	Cs	Cf	Cs
6.0 m 19'		*2750 kg *6,000 lb	*2750 kg *6,000 lb			*4300 kg *9,500 lb	*4300 kg *9,500 lb						
4.5 m 14'		*2750 kg *6,100 lb	2350 kg 5,100 lb	*4650 kg *10,300 lb	2750 kg 6,100 lb	*4900 kg *10,800 lb	4150 kg 9,200 lb	*5450 kg *12,100 lb	*5450 kg *12,100 lb				
3.0 m 9'		*2900 kg *6,400 lb	2100 kg 4,600 lb	4700 kg 10,300 lb	2650 kg 5,800 lb	*5850 kg *12,900 lb	3900 kg 8,600 lb	*7450 kg *16,400 lb	6250 kg 13,800 lb	*11750 kg *26,000 lb	*11750 kg *26,000 lb		
1.5 m 4'		*3200 kg *7,100 lb	2000 kg 4,400 lb	4550 kg 10,000 lb	2500 kg 5,600 lb	6550 kg 14,500 lb	3650 kg 8,100 lb	*9400 kg *20,700 lb	5700 kg 12,500 lb	*6800 kg *15,000 lb	*6800 kg *15,000 lb		
0 m 0'		*3700 kg *8,200 lb	2000 kg 4,400 lb	4450 kg 9,800 lb	2400 kg 5,300 lb	6350 kg 14,000 lb	3450 kg 7,600 lb	10250 kg 22,800 lb	5350 kg 11,800 lb	*7950 kg *17,500 lb	*7950 kg *17,500 lb		
-1.5 m -4'		4100 kg 9,000 lb	2200 kg 4,900 lb	4400 kg 9,700 lb	2350 kg 5,200 lb	6250 kg 13,700 lb	3350 kg 7,400 lb	10100 kg 22,300 lb	5250 kg 11,600 lb	*11300 kg *24,900 lb	10450 kg 23,100 lb	*7100 kg *15,700 lb	*7100 kg *15,700 lb
-3.0 m -9'		4900 kg 10,800 lb	2650 kg 5,900 lb			6250 kg 13,800 lb	3350 kg 7,400 lb	10150 kg 22,400 lb	5300 kg 11,700 lb	*15650 kg *34,500 lb	10650 kg 23,500 lb	*10850 kg *23,900 lb	*10850 kg *23,900 lb
-4.5 m -14'		*6900 kg *15,200 lb	3850 kg 8,400 lb					*9150 kg *20,200 lb	5500 kg 12,100 lb	*13200 kg *29,100 lb	11050 kg 24,300 lb		

\* Load is limited by hydraulic capacity rather than tipping. Ratings are based on SAE Standard No. J15010567. Rated loads do not exceed 87% of hydraulic lift capacity or 75% of tipping load.



Photo may include optional equipment.

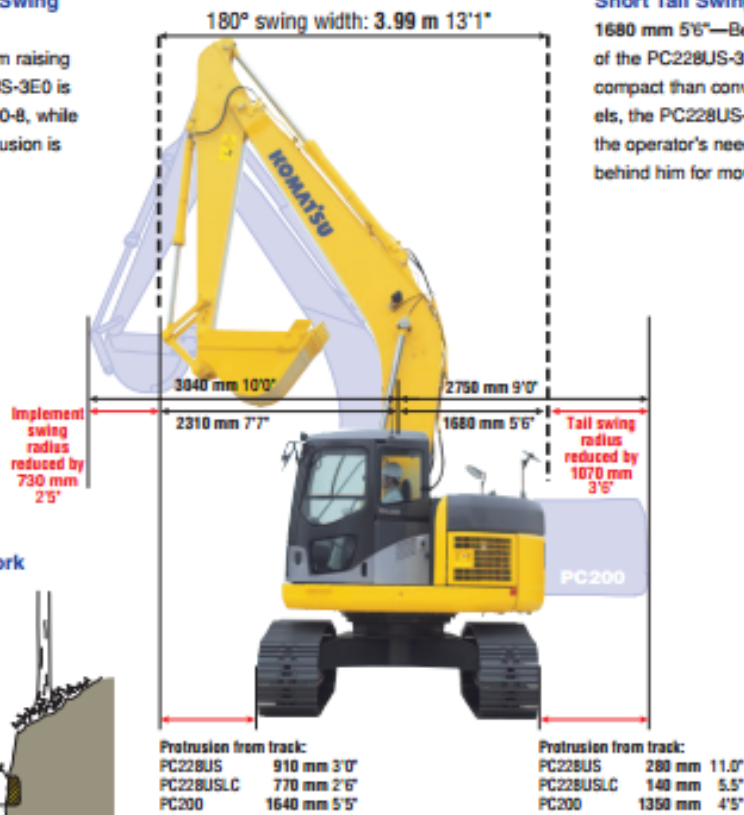
## Safety Operation with Small Tail Swing Even in Confined Areas

### Short Implement Swing Radius:

2310 mm 7'7"—Boom raising angle of the PC228US-3E0 is larger than the PC200-8, while front implement protrusion is lessened.

### Short Tail Swing Radius:

1680 mm 5'6"—Because the tail of the PC228US-3E0 is more compact than conventional models, the PC228US-3E0 reduces the operator's need to check behind him for movement.



### Logging Road Work

