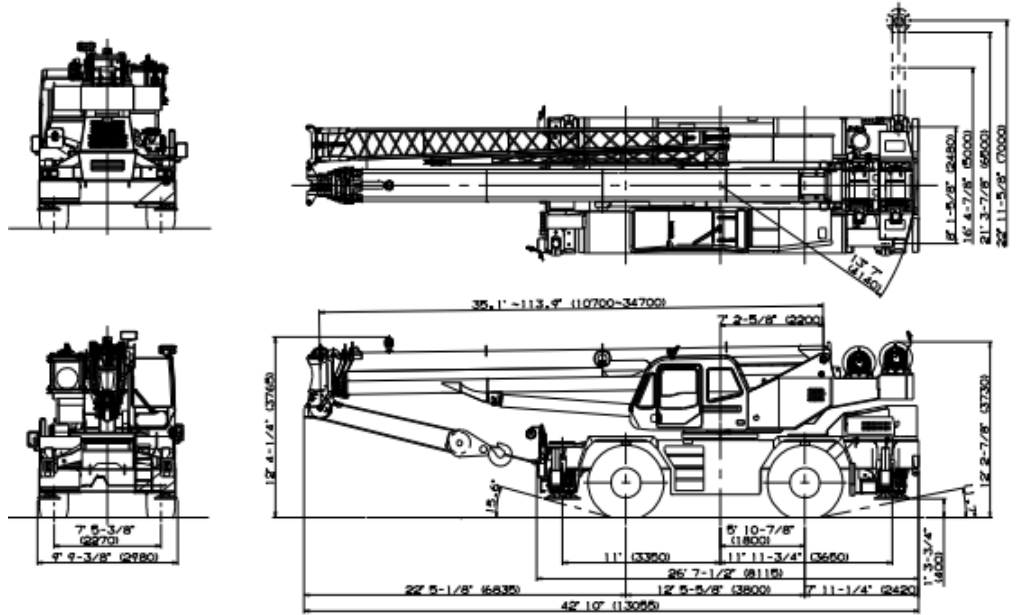


**Equipment 1473—
Tadano GR-500XL-2**



Note : Dimension is with boom angle at -0.8 degree.

**GENERAL DIMENSIONS
(23.5 - 25 Tires)**

	Feet	Meters
Turning radius		
4 wheel steer	22'	6.7
2 wheel steer	38' 5"	11.7
Tail swing of counterweight	13' 7"	4.14

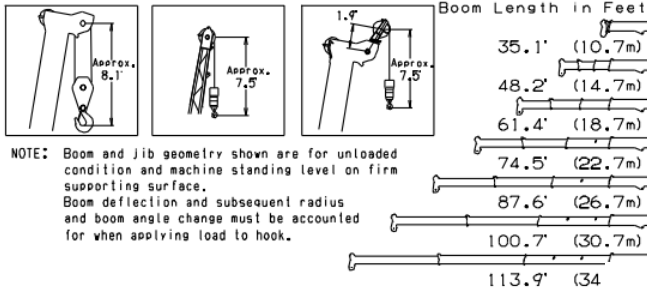
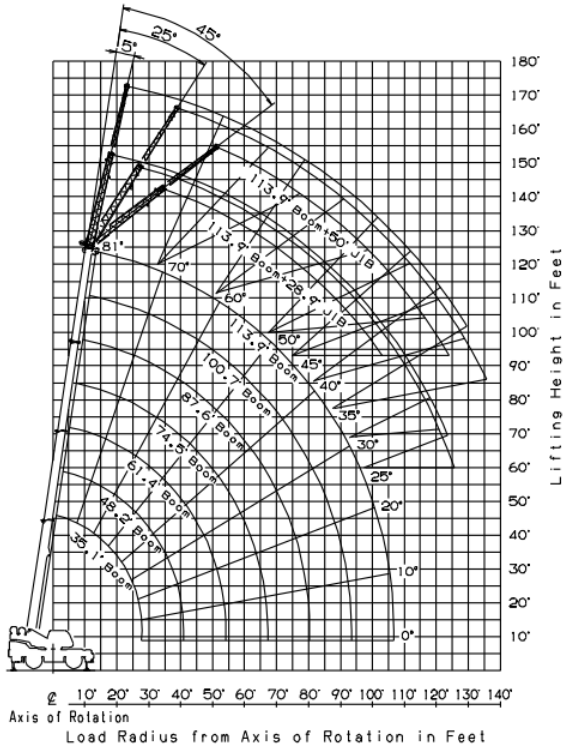
ON OUTRIGGERS FULLY EXTENDED 22' 11-5/8" (7.0m) SPREAD						
360° ROTATION						
C	113.9' (34.7m) Boom + 28.9' (8.8m) Jib					
	5° offset		25° offset		45° offset	
	R	W	R	W	R	W
80	25.6'	12,300	34.8'	8,400	41.5'	6,050
77.5	32.9'	12,000	41.3'	8,000	47.3'	5,900
75	39.8'	11,500	47.5'	7,650	53.1'	5,700
72.5	46.3'	10,600	53.6'	7,350	58.7'	5,550
70	52.3'	9,750	59.5'	7,100	64.0'	5,400
67.5	58.3'	9,100	65.1'	6,850	69.2'	5,300
65	64.0'	8,500	70.5'	6,600	74.0'	5,200
62.5	69.4'	7,900	75.6'	6,400	78.9'	5,100
60	74.8'	7,400	80.5'	6,200	83.7'	5,050
57.5	79.5'	6,500	85.5'	5,700	88.2'	5,000
55	84.0'	5,650	90.0'	5,200	92.5'	4,950
52.5	88.8'	5,000	94.1'	4,600	96.2'	4,450
50	93.1'	4,400	98.2'	4,100	99.7'	3,950
47.5	97.4'	3,950	102.1'	3,700	103.3'	3,550
45	101.4'	3,500	105.6'	3,300	106.6'	3,150
42.5	105.3'	3,150	109.1'	2,950		
40	109.0'	2,800	112.3'	2,650		
37.5	112.6'	2,500	115.5'	2,400		
35	115.8'	2,250	118.2'	2,200		
32.5	118.7'	2,050	120.9'	2,000		
30	121.6'	1,850	123.3'	1,800		
27.5	124.1'	1,700	125.3'	1,650		
25	126.3'	1,600	127.1'	1,550		

C	113.9' (34.7m) Boom + 50' (15.2m) Jib					
	5° offset		25° offset		45° offset	
	R	W	R	W	R	W
80	32.6'	6,350	47.6'	4,050	59.0'	2,750
77.5	40.8'	6,200	54.9'	3,900	65.3'	2,700
75	48.6'	6,050	61.9'	3,700	71.6'	2,600
72.5	56.0'	5,600	68.5'	3,550	77.5'	2,550
70	63.0'	5,200	75.0'	3,350	83.2'	2,500
67.5	69.6'	4,900	81.2'	3,200	88.7'	2,450
65	76.1'	4,600	87.0'	3,100	93.9'	2,400
62.5	82.2'	4,350	92.6'	3,000	98.9'	2,350
60	88.4'	4,150	98.1'	2,900	103.8'	2,350
57.5	94.4'	3,950	103.6'	2,800	108.4'	2,300
55	100.0'	3,800	108.7'	2,700	112.6'	2,300
52.5	105.4'	3,500	113.3'	2,650	116.7'	2,250
50	110.2'	3,150	117.9'	2,600	120.3'	2,250
47.5	114.8'	2,750	121.9'	2,400	124.0'	2,200
45	119.3'	2,400	125.7'	2,150	127.1'	2,100
42.5	123.3'	2,100	129.3'	1,900		
40	127.0'	1,850	132.7'	1,700		
37.5	131.1'	1,600	135.7'	1,500		
35	134.4'	1,400	138.5'	1,300		

C :Loaded boom angle (°)
R :Load radius in feet
W :Rated lifting capacity in pounds

GR-550XL RATED LIFTING CAPACITIES (IN POUNDS)

McCrosin Equipment Catalog



ON OUTRIGGERS FULLY EXTENDED 22' 11-5/8"(7.0m) SPREAD 360° ROTATION

B	35.1' (10.7m)		48.2' (14.7m)		61.4' (18.7m)		74.5' (22.7m)		87.6' (26.7m)		100.7' (30.7m)		113.9' (34.7m)				
	A	C	C	C	C	C	C	C	C	C	C	C	C	C			
8"	70	110,000															
10"	66	100,600	73	46,700	77	46,700	80	44,300									
12"	63	87,900	70	46,700	75	46,700	78	44,300	81	41,200							
15"	56	73,400	67	46,700	72	46,700	76	44,300	79	40,300	81	33,000					
20"	44	54,400	60	46,700	67	46,700	72	42,100	76	35,800	78	30,500	80	25,100			
25"	27	38,500	52	43,000	62	46,700	72	39,500	72	31,700	75	27,300	78	23,900			
30"			44	33,800	56	35,000	64	35,000	69	28,700	72	25,000	75	21,800			
35"			33	25,600	50	26,600	59	27,000	65	25,300	69	23,000	72	19,900			
40"			16	20,400	44	21,100	54	21,500	61	21,200	66	20,500	70	19,000			
45"					35	17,100	49	17,300	57	17,500	63	17,400	67	17,100			
50"					25	14,100	43	14,300	53	14,500	59	14,400	64	14,500			
55"							37	12,000	48	12,200	56	12,100	61	12,200			
60"							29	10,200	43	10,300	52	10,300	58	10,350			
65"								18	8,700	38	8,750	48	8,850	54	8,850		
70"										32	7,550	44	7,650	51	7,650		
75"										24	6,550	39	6,600	47	6,650		
80"										9	5,700	34	5,700	44	5,750		
85"											27	4,950	39	5,000			
90"											19	4,350	35	4,350			
95"												30	3,750				
100"													23	3,250			
105"														13	2,350		
D																	

LIFTING CAPACITIES AT ZERO DEGREE BOOM ANGLE ON OUTRIGGERS FULLY EXTENDED 22' 11-5/8"(7.0m) SPREAD 360° ROTATION

C	35.1' (10.7m)		48.2' (14.7m)		61.4' (18.7m)		74.5' (22.7m)		87.6' (26.7m)		100.7' (30.7m)		113.9' (34.7m)	
	A	B	B	B	B	B	B	B	B	B	B	B	B	B
0°	27.8'	16,500	41'	10,600	54.1'	7,000	67.3'	4,800	80.2'	3,300	92.7'	2,200	105.4'	1,400

ON OUTRIGGERS MID EXTENDED 21' 3-7/8"(6.5m) SPREAD 360° ROTATION

B	35.1' (10.7m)		48.2' (14.7m)		61.4' (18.7m)		74.5' (22.7m)		87.6' (26.7m)		100.7' (30.7m)		113.9' (34.7m)				
	A	C	C	C	C	C	C	C	C	C	C	C	C	C			
8"	70	110,000															
10"	66	100,600	73	46,700	77	46,700	80	44,300									
12"	63	87,900	70	46,700	75	46,700	78	44,300	81	41,200							
15"	56	73,400	67	46,700	72	46,700	76	44,300	79	40,300	81	33,000					
20"	44	54,400	60	46,700	67	46,700	72	42,100	76	35,800	78	30,500	80	25,100			
25"	27	38,500	52	40,500	62	41,300	68	39,500	72	31,700	75	27,300	78	23,900			
30"			44	28,300	56	29,000	64	29,500	69	28,700	72	25,000	75	21,800			
35"			33	21,000	50	21,600	59	22,100	65	22,400	69	22,500	72	19,900			
40"			16	16,300	43	17,000	54	17,300	61	17,500	66	17,600	70	17,700			
45"					35	13,700	49	14,000	57	14,100	62	14,300	67	14,200			
50"					25	11,100	43	11,300	53	11,700	59	11,800	64	11,700			
55"							37	9,500	48	9,700	55	9,900	60	9,800			
60"							29	8,000	43	8,200	52	8,300	57	8,200			
65"								18	6,500	38	7,000	48	7,000	54	7,000		
70"									32	5,900	43	6,000	50	6,000			
75"									24	5,000	39	5,000	47	5,000			
80"									9	4,000	33	4,300	43	4,400			
85"										27	3,700	39	3,700				
90"										19	2,900	35	3,100				
95"												29	2,700				
100"													23	2,200			
105"														12	1,650		
D																	

LIFTING CAPACITIES AT ZERO DEGREE BOOM ANGLE ON OUTRIGGERS MID EXTENDED 21' 3-7/8"(6.5m) SPREAD 360° ROTATION

C	35.1' (10.7m)		48.2' (14.7m)		61.4' (18.7m)		74.5' (22.7m)		87.6' (26.7m)		100.7' (30.7m)		113.9' (34.7m)	
	A	B	B	B	B	B	B	B	B	B	B	B	B	B
0°	27.8'	16,500	41'	10,600	54.1'	7,000	67.3'	4,800	80.2'	3,300	92.7'	2,200	105.4'	1,400

- A: Boom length in feet
- B: Load radius in feet
- C: Loaded boom angle (°)
- D: Minimum boom angle (°) for indicated length (no load)

NOTE: The lifting capacity data stored in the LOAD MOMENT INDICATOR (AML-C) is based on the standard number of parts of line listed in the chart. Standard number of parts of line for each boom length should be according to the following table.

Boom length in feet (meters)	35.1' (10.7m)	48.2' (14.7m)	61.4' (18.7m)	74.5' (22.7m)	87.6' (26.7m)	100.7' (30.7m)	113.9' (34.7m)
Number of parts of line	10	6	4	4	4	3	1

GR-550XL RATED LIFTING CAPACITIES (IN POUNDS)

ON OUTRIGGERS MID EXTENDED 16' 4-7/8"(5.0m) SPREAD 360° ROTATION

B	35.1' (10.7m)		48.2' (14.7m)		61.4' (18.7m)		74.5' (22.7m)		87.6' (26.7m)		100.7' (30.7m)		113.9' (34.7m)				
	A	C	C	C	C	C	C	C	C	C	C	C	C	C			
8"	70	110,000															
10"	66	100,600	73	46,700	77	46,700	80	44,300									
12"	63	87,900	70	46,700	75	46,700	78	44,300	81	41,200							
15"	56	72,400	67	46,700	72	46,700	76	44,300	79	40,300	81	33,000					
20"	44	54,400	60	39,900	67	40,700	72	41,400	76	35,800	78	30,500	80	25,100			
25"	27	24,800	52	26,000	62	26,600	68	27,200	72	27,500	75	27,200	78	23,900			
30"			44	18,600	56	19,000	63	19,500	68	19,800	72	19,000	75	19,500			
35"			33	13,700	50	14,400	59	14,800	65	15,000	69	15,000	72	15,100			
40"			16	10,400	43	11,200	54	11,700	61	11,900	65	11,900	69	11,900			
45"					35	8,800	49	9,300	57	9,500	62	9,500	66	9,600			
50"					25	7,000	43	7,500	53	7,700	59	7,700	63	7,800			
55"							37	6,000	48	6,150	55	6,150	60	6,300			
60"							29	5,000	43	5,000	51	5,000	57	5,100			
65"								18	3,700	38	4,050	47	4,050	54	4,150		
70"										32	3,300	43	3,300	50	3,400		
75"										24	2,650	38	2,700	47	2,800		
80"										9	2,000	33	2,100	43	2,200		
85"											27	1,600	39	1,700			
90"												18	1,050	34	1,300		
D																	

LIFTING CAPACITIES AT ZERO DEGREE BOOM ANGLE ON OUTRIGGERS MID EXTENDED 16' 4-7/8"(5.0m) SPREAD 360° ROTATION

C	35.1' (10.7m)		48.2' (14.7m)		61.4' (18.7m)		74.5' (22.7m)		87.6' (26.7m)		100.7' (30.7m)	
	A	B	B	B	B	B	B	B	B	B	B	B
0°	27.8'	16,500	41'	9,900	54.1'	5,670	67.3'	3,480	80.2'	1,980	92.7'	900

ON OUTRIGGERS MIN EXTENDED 8' 1-5/8"(2.48m) SPREAD 360° ROTATION

B	35.1' (10.7m)		48.2' (14.7m)		61.4' (18.7m)		74.5' (22.7m)		87.6' (26.7m)		100.7' (30.7m)		113.9' (34.7m)				
	A	C	C	C	C	C	C	C	C	C	C	C	C	C			
8"	70	75,800															
10"	66	48,500	73	46,700	77	46,700	80	44,300									
12"	62	34,100	70	35,900	75	35,700	78	34,900	80	33,600							
15"	56	22,600	67	24,100	72	24,800	76	24,700	78	23,900	80	23,000					
20"	45	13,000	60	14,300	67	14,900	72	15,400	75	15,100	77	14,600	79	13,900			
25"	29	8,050	52	9,200	62	9,700	67	10,200	71	10,400	74	10,000	76	9,500			
30"			44	6,100	56	6,600	63	7,000	68	7,200	71	7,000	74	6,700			
35"			33	3,900	50	4,400	59	4,800	64	5,000	68	5,000	71	4,700			
40"			17	2,500	43	2,900	54	3,300	60	3,500	65	3,500	68	3,300			
45"					35	1,800	49	2,100	56	2,300	61	2,400	65	2,200			
50"							43	1,200	52	1,400	58	1,500	62	1,400			
D																	

LIFTING CAPACITIES AT ZERO DEGREE BOOM ANGLE ON OUTRIGGERS MIN EXTENDED 8' 1-5/8"(2.48m) SPREAD 360° ROTATION